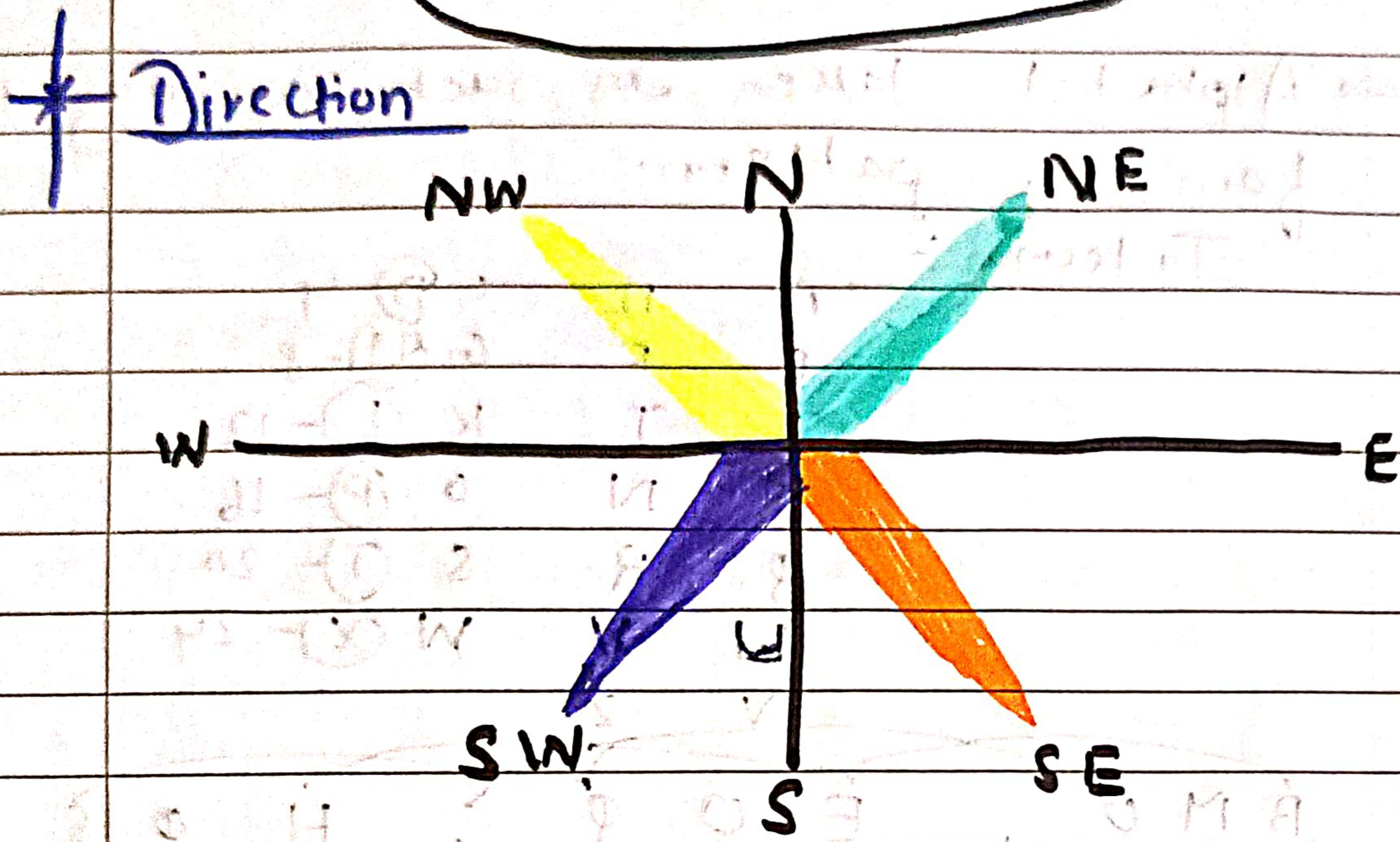


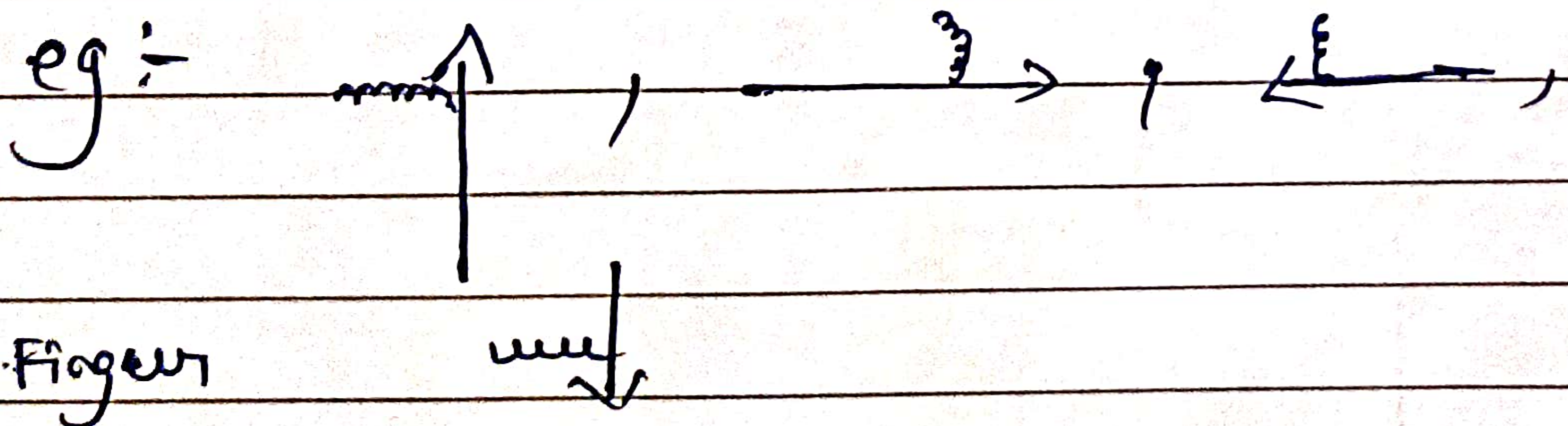
Direction Test



* Some important concept

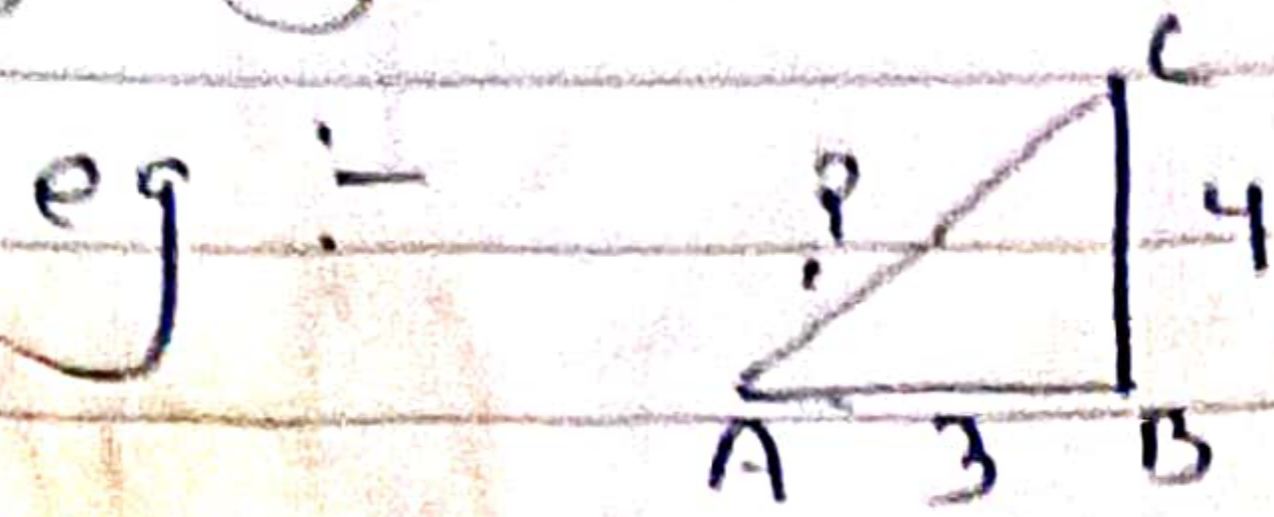
What does it mean by turning left or right

→ Left - Right Hand, Right - Left Hand



mm = Finger

* Pythagoras Theorem



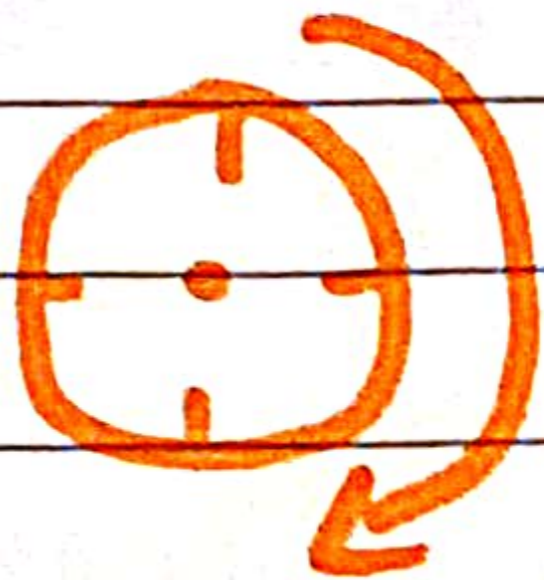
$$AB = 3 \text{ km}$$

$$BC = 4 \text{ km}$$

$$AC = \sqrt{(AB)^2 + (BC)^2}$$
$$= \sqrt{(3)^2 + (4)^2}$$
$$= \sqrt{9 + 16} = \sqrt{25}$$
$$= \sqrt{25} = 5$$

* Concept of Rotation & Degree

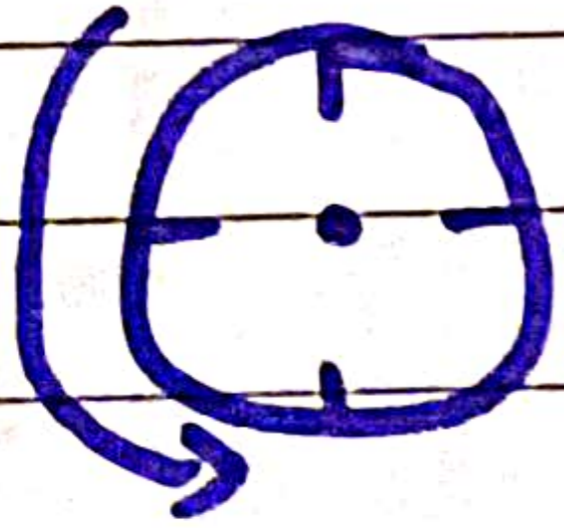
• Clockwise



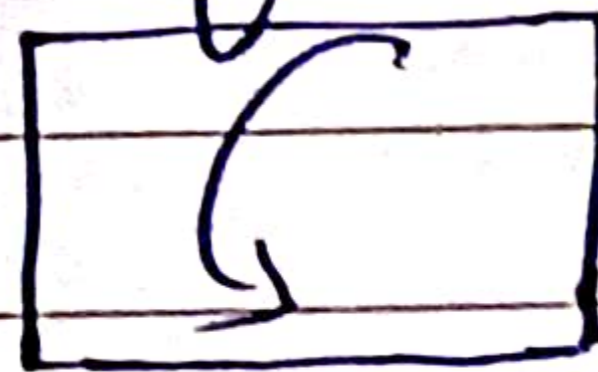
→ Right Side - 90°



• Anticlockwise



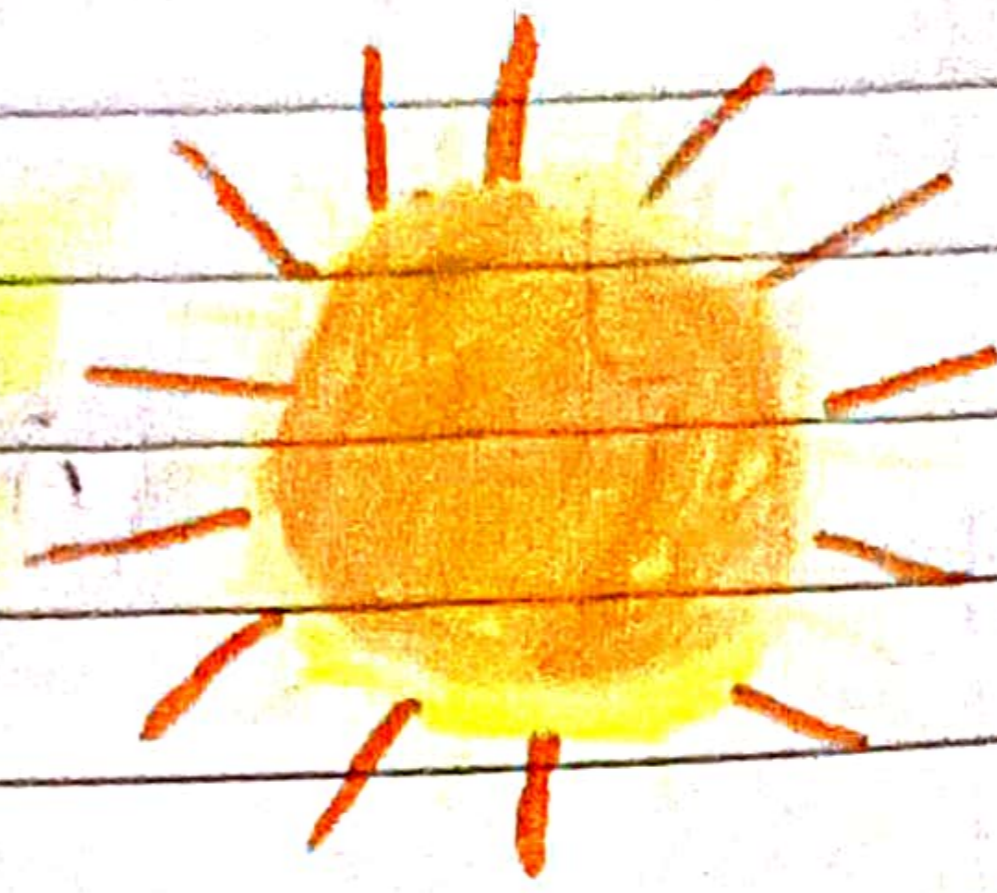
→ Left Side - 90°



SUN

MORNING

Sun rises from East

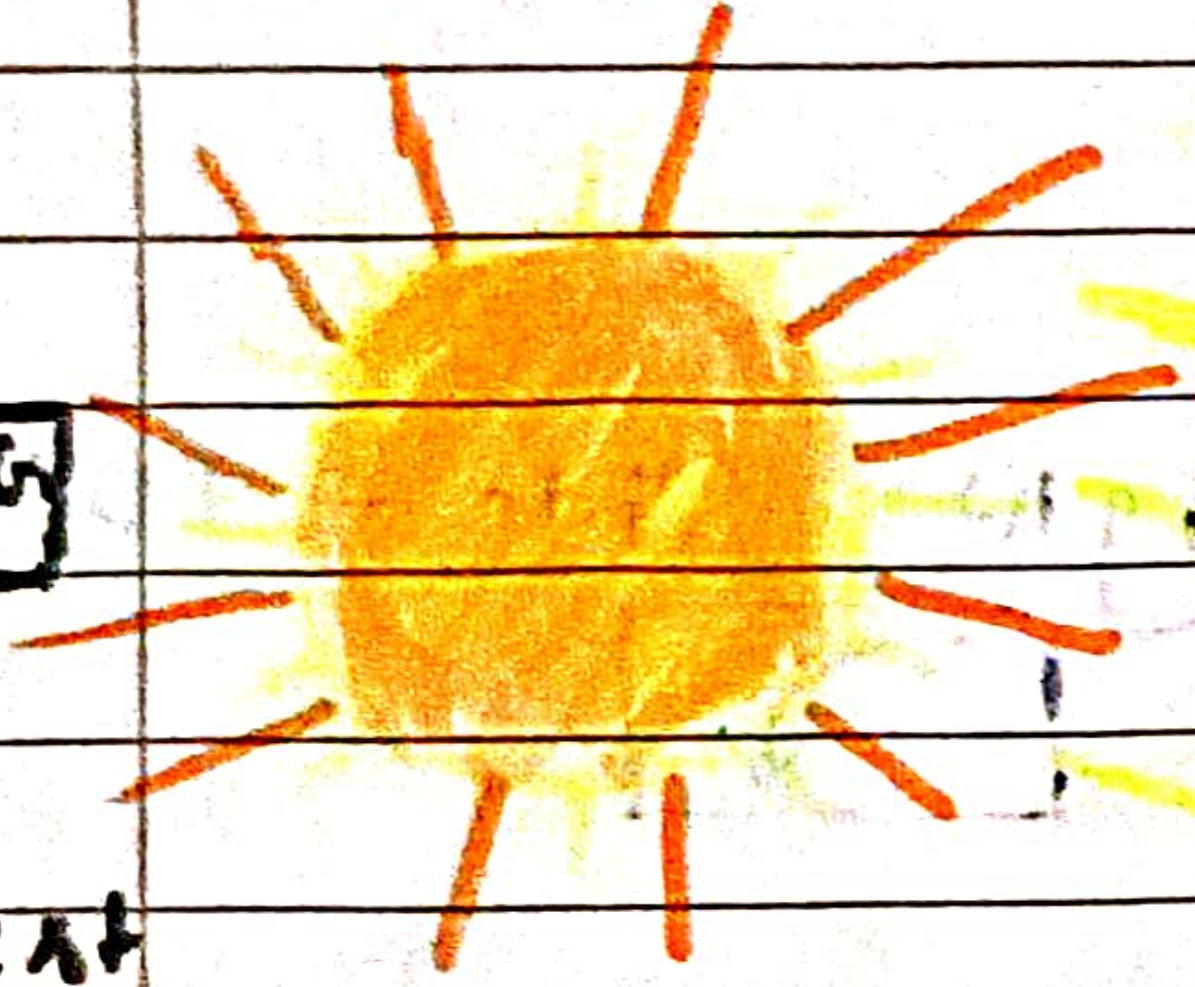


SHADOW

WEST

EVENING

Sunset to west



EAST

SHADOW